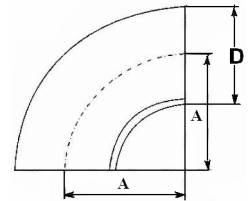


卫生级管件 Sanitary Pipes and Fittings (材质 Material: 304, 316, 316L)

焊接式弯头 Sanitary Welded Elbows

主要参数 Parameters(mm)

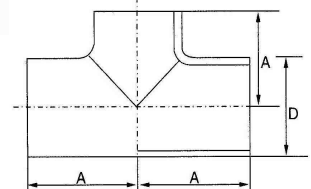
size	D	A
3/4"	19	28
1"	25.4	33.5
1-1/4"	32	38
1-1/2"	38	48.5
2"	51	60.5
2-1/2"	63.5	83.5
3"	76.3	88.5
3-1/2"	89	103.5
4"	101.6	127



焊接式等径三通 Sanitary Welded Tees

主要参数 Parameters(mm)

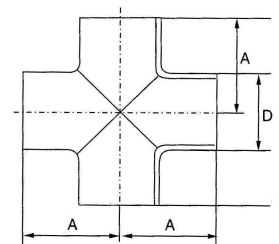
size	D	A
1"	25.4	33.5
1-1/4"	32	38
1-1/2"	38	48.5
2"	51	60.5
2-1/2"	63.5	83.5
3"	76.3	88.5
3-1/2"	89	103.5
4"	101.6	127



焊接四通 Welded Crosses

主要参数 Parameters(mm)

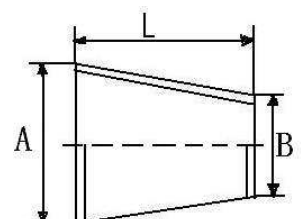
size	D	A
1"	25.4	33.5
1-1/4"	32	38
1-1/2"	38	48.5
2"	51	60.5
2-1/2"	63.5	83.5
3"	76.5	88.5
3-1/2"	89	103.5
4"	101.6	127



焊接大小头 Welded Reducer

主要参数 Parameters(mm)

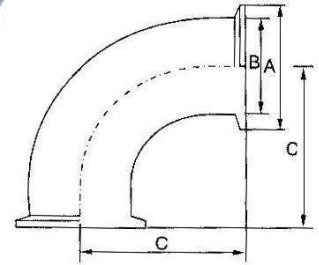
size	A	B	L
1"×3/4"	25.4	19	47
1-1/4"×1"	32	25.4	47
1-1/2"×1"	38	32	52
2"×1-1/2"	51	38	64
2"×1-1/4"	51	32	64
2"×1"	51	25.4	64
2-1/2"×2"	63.5	51	64
2-1/2"×1-1/2"	63.5	38	64
2-1/2"×1-1/4"	63.5	32	64
2-1/2"×1"	63.5	25.4	64
3"×2-1/2"	76.3	63.5	64
3"×2"	76.3	51	64
3"×1-1/2"	76.3	38	64
3-1/2"×3"	89	76.3	64



快装式弯头 Quick Elbows

主要参数 Parameters(mm)

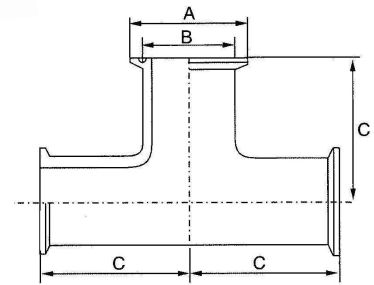
size	B	A	C
3/4"	19.6	50.5	49.5
1"	24.5	50.5	55
1-1/4"	32	50.5	65
1-1/2"	38	50.5	70
2"	61	64	82
2-1/2"	63.5	77.5	105
3"	76.3	91	110
3-1/2"	89	106	120
4"	101.6	119	160



快装三通 Quick Tees

主要参数 Parameters(mm)

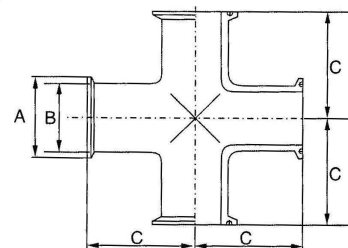
size	A	B	C
1"	50.4	25.4	55
1-1/4"	50.5	32	60
1-1/2"	50.5	38	70
2"	64	51	82
2-1/2"	77.5	63.5	105
3"	91	76.3	110
3-1/2"	106	89	125
4"	119	101.6	148



快装四通 Quick Crosses

主要参数 Parameters(mm)

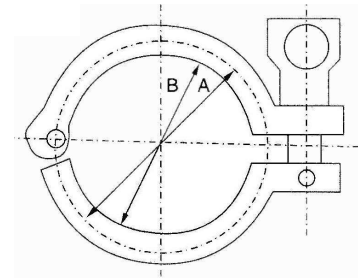
size	B	A	C
1"	25.5	50.5	55
1-1/2"	38	50.5	70
2"	51	64	82
2-1/2"	63.5	77.5	105
3"	76.3	91	110
4"	101.6	119	160



精铸卡箍 Clamp Ferrule

主要参数 Parameters(mm)

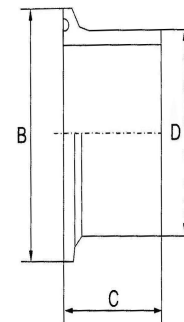
size	Φ	A	B
1"	25.4	53.5	44.5
1-1/4"	32	53.5	44.5
1-1/2"	38	53.5	44.5
2"	51	66.5	57.5
2-1/2"	63.5	81	72.0
3"	76.3	94	85.0
3-1/2"	89	108	102
4"	101.6	122	113



卫生级卡盘 Sanitary Chuck

主要参数 Parameters(mm)

size	D	B	C
1"	25.4	50.5	21.5
1-1/4"	32	50.5	21.5
1-1/2"	38	50.5	21.5
2"	51	64	21.5
2-1/2"	63.5	77.5	21.5
3"	76.2	91	21.5
4"	101.6	119	21.5



卫生级焊式活节 Sanitary Welded Movable Fittings

主要参数 Parameters(mm)

size	DN	B	A	D/Cxt
1"	25	30	51	25.4/22.4×1.5
1-1/4"	32	30	60	31.8/28.8×1.5
1-1/2"	38	33	72	38.1/35.1×1.5
2"	51	33	82	50.8/47.8×1.5
2-1/2"	63	37	97	63.5/59.5×2
3"	76	39	111	76.2/72.2×2
3-1/2"	89	41	125	88.9/84.9×2
4"	102	44	146	101.6/97.6×2

